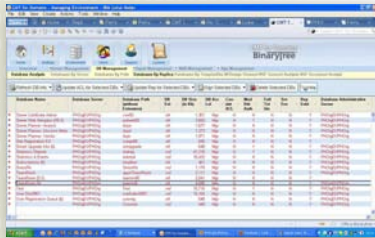
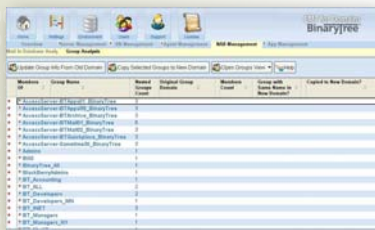


TRANSFORM DOMINO!

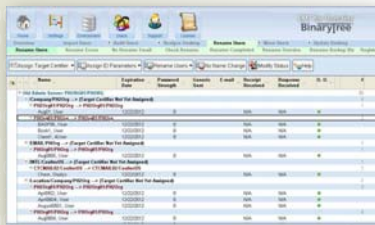
CMT for Domains is the software tool of choice for transforming your Domino environment for corporate rebranding initiatives, domain and server consolidations, migrations from an on-premises Lotus environment to hosted Notes cloud-computing environment, and for a host of other Notes and Domino infrastructure optimization projects including renaming users and moving and renaming servers.



A thorough analysis of your environment



Automate updates to Domino directories



An automated user renaming process

CMT for Domains™ significantly reduces the time, effort, and cost of migrating, consolidating, or separating Lotus Domino domains

Some of the most complex and time-consuming Domino infrastructure modifications include migrating, consolidating, or separating Lotus Notes and Domino Domains. CMT for Domains dramatically reduces the time, effort and cost usually associated with such projects. It completes these projects in an orderly fashion with limited involvement of the administrative staff and virtually no disruption of service for end users.

Thorough Environment Analysis

CMT for Domains analyzes Domino Servers and Notes Databases, providing administrators with information that is not available with any other analysis tool. In most cases, issues or problems uncovered during the analysis can be addressed from CMT for Domains with a simple push of a button.

Detailed User Audit and Email File Configuration

CMT for Domains audits User and Mail File configuration, identifying problems and allowing their correction with a simple push of a button.

Automated Rename Process

CMT for Domains automates each step of the User Rename process. Without CMT for Domains, this process normally consists of multiple tasks executed from various areas of the Lotus Notes Administrator client and, potentially, taking hours and days to complete.

Easy User Move to New Email Servers

CMT for Domains automates each step of the User Move process by creating replicas of mail files on destination Domino Servers, updating ACLs to reflect the Mail Server change and updating Domino Directories and forcing replication to immediately propagate changes to all Domino Servers in a Notes Domain.

Remote Desktop Update

The Desktop Update e-mail is sent to each user for easy processing. As a result, each user's desktop is updated to reflect migration results, including location and connection documents in their Personal Address Book, mail file and application icons and bookmarks.

Easy Process Management from a Notes Database

The entire process is easily managed and monitored from a centralized Notes Database giving Administrators complete control over the process.

For more information, white papers, case studies and a cost avoidance calculator on CMT for Domains, visit www.binarytree.com/domains.

CMT for Domains Features & Functions

A Sampling of CMT for Domains Customers...

Abbott Labs
 Aramark / ServiceMaster
 Bank of New York
 BASF
 Beckman Coulter
 Becton Dickinson
 Cadbury Schweppes
 Carestream
 Cargill
 Catholic Healthcare Partners
 Chevrolet UK
 Clorox
 Commerce Bank
 Dana Corporation
 Deutsche Bank
 Formica
 GATX
 GM/GMAC
 Hannaford Brothers
 Henkel
 Honda Aircraft
 HSBC
 Humana
 International Paper
 Jones Day
 Loews
 Los Alamos National Laboratory
 Marsh McLennan
 May Department Stores
 MetLife
 NYSE
 Pactiv
 Publicis
 R.R. Donnelly
 Sherwin-Williams
 Sony DADC
 SunGard
 Towers Perrin
 US Bank
 US Department of Commerce
 US Foodservice
 Whirlpool
 XTO Energy

Activity	Without CMT for Domains	With CMT for Domains
Management of Migration Process	Progress & status of various migration tasks are obtained by time-consuming means of emails, telephone calls and review of various databases	All information is available via a click of a button in views corresponding to single or multiple migration steps. Built-in workflow logic drives the entire migration process
Environment & User Audit	Information about servers, Databases & users is obtained by using a variety of Domino tools or manually	Information is obtained via a click of a button & managed in an easy to use view
Initiating rename of multiple users to new hierarchical name or upgrade to hierarchical names	Task is manually initiated, requires multiple actions in different databases & can take hours to complete. Users are informed about the upcoming changes via emails, telephone calls, or not at all	Task is fully automated & is usually completed in minutes. Users are informed automatically by customizable, system generated emails
Monitoring rename progress	Task is performed manually by emails, telephone calls, or not at all	Task is performed via click of a button & reflects various stages of rename progress for each user
Moving users &/or applications to a different Notes Domain and/or Domino server; updating the Domino Directory to reflect the move	Domino Directory Updates reflecting user moves are manual & do not ensure backward compatibility of mail routing in cases of moving users to a new Notes Domain. Domino Directory replication is either done manually or on pre-set schedule resulting in potential looping messages, temporarily missing users & other problems.	Domino Directory updates are automatic & ensure complete backward compatibility of mail routing in cases of moving users to a new Notes Domain. Domino Directory replication is initiated instantly between all pre-selected Domino servers.
Monitoring Move Progress	Task is performed manually for individual users and/or applications by reviewing logs and various databases	Task is performed via a click of a button & reflects various stages of move progress for each user
Notes Desktop Update	Task is performed manually by different means of desktop access; personal visits, remote access, telephone calls, or email instructions from administrators	Task is performed via a click of a button resulting in distribution of completely customizable emails containing buttons to completely update desktops with minimal user interaction
Monitoring Desktop Update progress	Desktop update is virtually impossible to effectively monitor unless it is performed manually for each user	Execution of Desktop Update button results in detailed process logs automatically emailed to CMT for Domains™ for effective process monitoring

For more information, white papers, case studies and a cost avoidance calculator on CMT for Domains, visit www.binarytree.com/domains.



U.S. and Worldwide: +1 (212) 244-3635 | U.K.: +44 (0) 20 7692 5661 | Germany: +49 69 66 55 43 79
 sales@binarytree.com | www.binarytree.com

© 2010 Binary Tree, Inc. All rights reserved.

Binary Tree, the Binary Tree logo, and CMT for Domains are trademarks of Binary Tree, Inc. All other trademarks or registered trademarks are the property of their respective rights holders.

